



National C Scow Sailing Association

Sailing Instructions

NCSSA Eastern Region C-Scow Regatta

Saturday, June 13th – Sunday, 14th, 2009

Liability Disclaimer: Sailing is an activity that has an inherent risk of damage and injury. Participants in this event are participating entirely at their own risk. See RRS 4, Decision to Race. The race organizers (the organizing authority, race committee, protest committee, host club, sponsors, or any other organization or official) will not be responsible for damage to any boat or other property or the injury to any participant, including death, sustained as a result of participation in this event. By participating in this event, each participant agrees to release the race organizers from any and all liability associated with such participant's participation in this event to the fullest extent permitted by law.

1. **RULES** The regatta will be governed by the “rules” as defined in the current Racing Rules of Sailing. It is classified as an “invitational” Category A event in accordance with ISAF Regulation 20.
- 1.1 This regatta is an NCSSA Annual Blue Chip Regatta qualifying event.
2. **ENTRIES** The regatta is open to Class C Scows. The Organizing Authority is the Chautauqua Yacht Club. Eligible boats may be entered by completing registration.
3. **NOTICES TO COMPETITORS** Notices to competitors will be posted on the Official Notice Board located at Regatta Headquarters (the YAC), South Lake Drive, Chautauqua, NY, 14722.
4. **CHANGES IN THE SAILING INSTRUCTIONS** will be posted at the completion of the Competitors' Briefing Meeting or prior to 0800 hrs on the day the change is to take effect, whichever is later, except that any change in the schedule of races will be posted by 1800 hrs on the day before the change will take effect.
5. **COMPETITORS' BRIEFING MEETING:** 9am on Saturday, June 19, 2009 at Regatta Headquarters (the YAC).
6. **SIGNALS MADE ASHORE**
 - 6.1 Signals made ashore will be displayed by the signal boat.
 - 6.2 When flag AP (Answering Pennant) is displayed ashore, “1 minute” is replaced with “not less than 30 minutes” in Race Signal AP.
 - 6.3 Approximately one hour prior to the scheduled warning signal, the signal boat will fire a gun, or make another sound signal.
7. **SCHEDULE OF RACES**
 - 7.1 Warning signal for Race 1 is scheduled for Saturday, June 13th, 2009, at 10am. More races will be sailed as conditions permit. Back-to-back races may be sailed at any time to maintain the schedule or make up un-sailed races. Additional schedule times will be posted on the Official Notice Board.

7.2 Five races are scheduled.

7.3 No race shall start after 1pm on Sunday, June 14th, 2009.

8 RACING AREA The racing area will be the waters of Lake Chautauqua.

9 THE COURSE

10.1 A leeward gate will be used on the downwind legs of all courses (not reaching legs).

10.2 The RC Signal Boat will display the course to be sailed with letters and numbers and the approximate compass heading from the starting line to the first mark.

10.3 The Race Committee will make the length of the race in miles that will approximate 75-90 minutes in time.

10.4 A boat observed to violate rule 28.1 (Sailing the Course) shall be scored DNF by the RC without a hearing. This changes rules 63.1 and A5.

11 MARKS AND CHANGE OF THE POSITION OF THE NEXT MARK

11.1 Original marks will be orange balls. If any marks are different in shape or color, they will be displayed at the Competitors' Briefing and a notice stating the differences will be posted.

11.2 New marks, used in accordance with RRS 33 (Changing the position of the next mark), will be similar to the original marks.

11.3 RRS 33 is changed to allow the new compass bearing to be broadcast on the competitor channel and displayed using red rectangle or green triangle placards.

11.4 Minor adjustments in a mark's location will not be signaled. This changes RRS 33.

12 THE START

12.1 The Warning Signal flag for starting will be displayed at the skipper's meeting.

12.2 The Starting Line will be:

- a) between staffs displaying orange flags on two RC boats, or
- b) from a staff displaying an orange flag on an RC boat at the starboard end, to the course side of a starting mark at the port end.

12.3 A boat attempting to start more than 4 minutes after her starting signal shall be scored DNS. This changes RRS A4.1.

12.4 There shall be a minimum of two persons onboard a boat that is racing.

13 RECALLS Following the display of the individual recall signal, the RC will attempt to announce by VHF radio the racing number of all boats identified on the course side of the starting line at the starting signal. This changes RRS 29.2. Such announcement is a courtesy and failure by the RC to make the announcement, or of boats to hear or understand it, shall not constitute grounds for redress. This supplements RRS 62.1 (a).

14 Z FLAG AND BLACK FLAG RRS 30.2, 30.3 and 36 are changed as follows:

- a) If a General Recall is signaled after the starting signal, all competitors who received a 20% scoring penalty under RRS 30.2 or were disqualified under RRS 30.3 in the recalled race are again eligible to race without penalty.
- b) After the start, boats that have not complied with RRS 30.3 will be notified by VHF radio. After receiving notification, such boats shall keep clear of all other boats unless they intend to act under RRS 60.1(b).

15 THE FINISH

15.1 The finishing line will be between a staff displaying an orange flag on a race committee boat and the course side of a nearby mark, or between staffs displaying orange flags on two race committee boats.

- 15.2 A 2nd Substitute flag, which is a blue and white pennant, displayed by the RC in the finishing area indicates that another race will be started as soon as possible.
- 15.3 Race Signal for flag S is modified as follows: When finishing at the end of a leg that ends at a leeward gate, the finishing line will be between an RC boat displaying flag S and the remaining gate mark or between two RC boats. This changes rule 32.2(c). Boats that are racing, but not finishing shall treat the RC boats or the RC boat and the nearby mark as gate marks.

16 TIME LIMIT

- 16.1 The time limit will be two hours for each race.
- 16.2 Boats still racing 30 minutes after the first boat sails the course and finishes will be scored the position of the last boat to finish plus 2. This changes RRS 35 and A4.1.

17 PROTESTS

- 17.1 A boat intending to protest about an incident that occurs in the racing area shall notify the RC finish boat of her intention, including the sail number of the boat (s) being protested. This changes RRS61.1 (a)
- 17.2 Upon landing, the RC shall post the Dock Time of the RC signal boat and the numbers of all known protesting and protested boats and RC actions.
- 17.3 Protests shall be written on forms available at Regatta Headquarters and lodged with the Protest Committee Chairperson or other designated person within the protest time limit, which is one hour after Dock Time.
- 17.4 Protest hearing notices will be posted within 15 minutes of the protest time limit to inform competitors where and when there is a hearing to which they are parties, or named as witnesses.
- 17.5 The protest committee will hear protests as soon as possible, in approximately the order of receipt.
- 17.6 On the last scheduled race day, a party to a hearing may ask for a reopening no later than one hour after being informed of the decision. This changes RRS 66.
- 17.7 RRS 62.2 is changed in that the words ‘two hours’ are deleted and replaced by ‘one hour.’ The prescription to this rule is changed by deleting the words ‘before 1800 on the day,’ and substituting ‘within one hour.’

- 18 SCORING** The low point system, RRS A4, will apply, except that RRS A2 is changes so that each boat’s total score will be the sum of her scores for all races.

19 PENALTIES FOR BREAKING RULES OF PART 2 (RRS 44)

- 19.1 Penalties for breaking RRS 42: Appendix P will apply.
- 19.2 Penalty for breaking rules of Part 2 (RRS44): The Two-Turns Penalty, RRS 44.2 Shall apply.

20 COMMUNICATION

- 20.1 VHF radio channel 72 will be the primary means used by the RC to communicate with competitors.
- 20.2 Failure to hear a RC transmission shall not constitute grounds for redress. This changes RRS 62.1 (a).
- 20.3 The only communication devices that may be used by competitors when racing are: (a) a weather monitor, (b) a VHF radio tuned to receive only RC transmissions that are intended for all boats, and (c) a cell phone that may be used for emergency purposes only. The penalty for breaking this rule will be total disqualification from the regatta or such lesser penalty as may be determined by the Protest Committee.
- 20.4 Except to make a required report or in an emergency, no transmission shall be made to the RC or other person when racing.

- 21 OUTSIDE HELP** A boat that receives outside help other than help permitted by RRS 41, or from a non-competitor or non-competing boat, shall retire. This changes RRS 41.

COURSE ILLUSTRATIONS

COURSE DISPLAY

THE COURSE IS A COMBINATION OF LAPS DISPLAYED USING THE TYPE OF LAP (W = WINDWARD/LEEWARD LAP, T = TRIANGLE LAP), A NUMBER INDICATING THE NUMBER OF SUCCESSIVE REPETITIONS OF THAT PARTICULAR TYPE OF LAP, AND A MODIFIER (+) IF THE FINISH IS TO BE TO WINDWARD.

EXAMPLES

W3+ = W—W—W—UPWIND LEG TO FINISH

W2T+ = W—W—T—UPWIND LEG TO FINISH

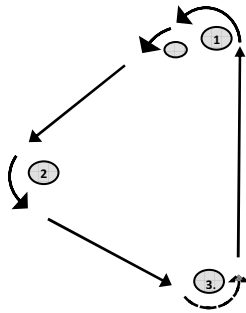
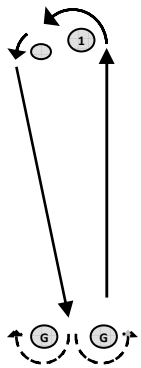
W3 = W—W—W (DOWNWIND FINISH)

W2T = W—W—T (DOWNWIND FINISH)

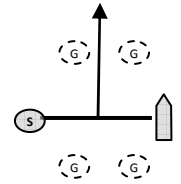
WTW+ = W—T—W—UPWIND LEG TO FINISH

W2T2+ = W—W—T—T—UPWIND LEG TO FINISH

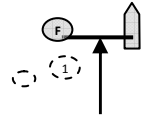
NOTE: AN RC BOAT MAY BE SUBSTITUTED FOR MARK(S) (S) OR (F) ON STARTING OR FINISHING LINES



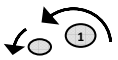
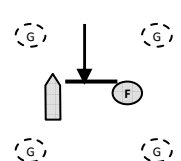
STARTING LINE



+ = UPWIND FINISHING LINE



DOWNWIND FINISHING LINE



1 = WINDWARD MARK WITH OFFSET



G = LEEWARD GATE



2 = GYBE MARK

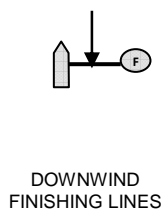
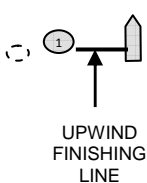


3 = LEEWARD MARK



MARKS TO BE IGNORED IF PRESENT

FINISHING LINES – RULE 32 (REDUCED NUMBER OF LEGS)



ALLOWABLE ROUND-AN-END COURSES WITH MID-STARTING LINE BOAT (ALSO SEE SIs)

